

Yoma Textiles: ecological fabric

LEED category: MRc6 Rapidly Renewable Materials



la rive

100% Wool

OEKO-TEX Certified
Rapidly renewable
Recyclable fabric
Naturally soil-resistant,
no need for topical treatment



coco

70% Cotton/Linen
renewable content



lyon

100% Cotton

Natural content
Rapidly renewable
Recyclable fabric



belgo road

45% Cotton
renewable content



la ronde

39% Cotton
renewable content



sienna

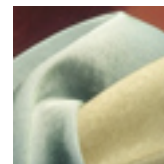
100% Linen

Natural content
Rapidly renewable



les baux

33% Cotton
renewable content



lumiere

35% wool
renewable content



vendome

100% Wool Mohair

Natural content
Rapidly renewable
Recyclable fabric
Naturally soil-resistant,
no need for topical treatment



parapluie

42% Cotton
renewable content



tatami

46% Cotton
renewable content

LEED category: MRc5 Regional Manufacturing

Bardot	Elan	Lumiere	Parapluie	Ribbon Stripe
Belgo Road	Irise	Marais	Persienne	Tatami
Bijoux	La Ronde	Marseilles	Raku	Verona
Cadeaux	Les Baux	Matsu	Rhone	

Woven in USA. May contribute to regional manufacturing, depending on location of project within the United States

Yoma Textiles: ecological fabric

LEED categories: see below



irise LEED MRc4 Recycled Content

100% Recycled Polyester

Recycled Content
Inherantly passes NFPA 701,
no need for topical treatment



marais LEED IDcI Innovation in Design

100% Solution Dyed Nylon

No Water pollution in dyeing
Recyclable fabric
Extremely Heavy duty - reducing
need for replacement



marseilles LEED IDcI Innovation in Design

100% Sunbrella, Solution Dyed Acrylic

No Water pollution in dyeing
Recyclable fabric - program
developed specifically for
Sunbrella fabrics



matsu LEED IDcI Innovation in Design

100% Solution Dyed Nylon

No Water pollution in dyeing
Recyclable fabric
Extremely Heavy duty - reducing
need for replacement



mockingbird + hummingbird

88% Recycled Polyester

LEED MRc4 Recycled Content

12% Polyurethane

Recycled content
Extremely Heavy duty - reducing
need for replacement